



Contents

A Picture Atlas of Neighborhoods

4-15

Where do people live?	4-5
What do neighborhoods look like?	6-7
What are our needs and wants?	8-9
Where do people work?	10-11
What rules do people obey?	12-13
How do neighborhoods change?	14-15

What Can You Learn About Maps and Globes? 16-27

What view does a map show?	16-17
How do maps show real places?	18-19
What is a globe?	20-21
How can you see the whole world at once?	22-23
Where is your continent?	24-25
How do maps show your country?	26-27

Samples are provided for evaluation purposes. Copying of the product or its parts for resale is prohibited. Additional restrictions may be set by the publisher.

2012 Update of Names and Boundaries

© 2005, 1998 Herff Jones, Inc.
4719 W. 62nd St., Indianapolis, Indiana 46268

All rights reserved. No part of this book may be reproduced or transmitted in any form or by any means, electronic or mechanical, including photocopying, recording, or by any information storage and retrieval system, without permission in writing from the publisher.

Printed in U.S.A

10 9 8 7 6 16 15 14 13 12

Print ISBN: 978-0-7825-1022-5 Product Code: 9A97A
E-book ISBN: 978-0-7825-1597-8 Product Code: SL5-A97A-NA

To order: herffjonesnystrom.com or 800-621-8086

What are our needs and

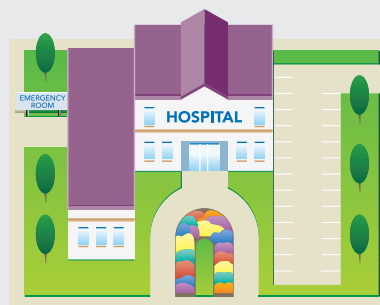
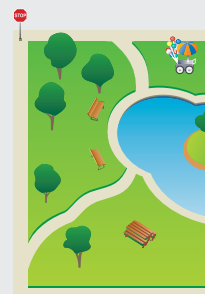
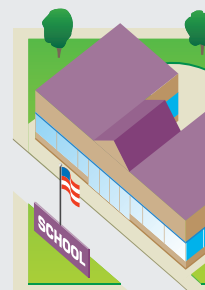


A We need ways to communicate with others.



Find places for meeting needs and wants.

✎ This neighborhood has things people need. It also has things they want.



B We need food for our health.



C We need clothes to keep us warm.

wants?



Which things are both needs AND wants?



D We need transportation for going places.



What are YOUR wants?



E We need a place to live.



F We want toys for having fun.

What view does a



A We see a **view from the ground** when we're walking.



The same park is shown in all the pictures.



B A **bird's-eye view** looks down at an angle.

map show?

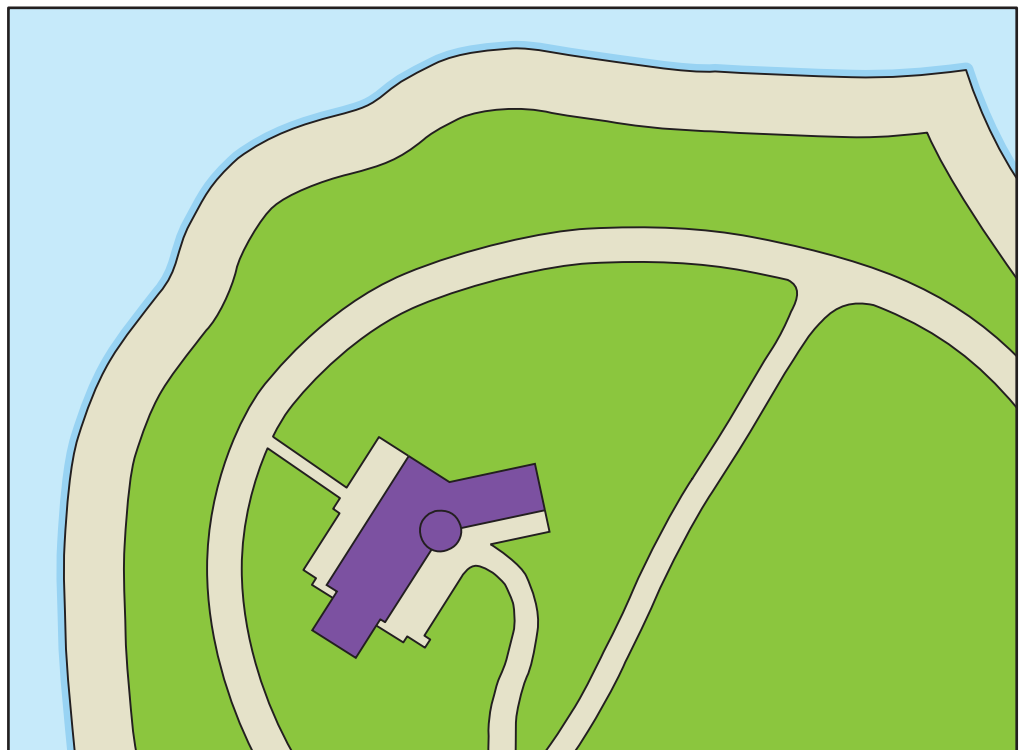


How is the map LIKE the photo?



C A view from directly above looks straight down.

How is the map DIFFERENT from the photo?



D A map is a special drawing of a view from directly above.